

WARMAN®
Centrifugal Slurry Pumps

Excellent
Minerals
Solutions



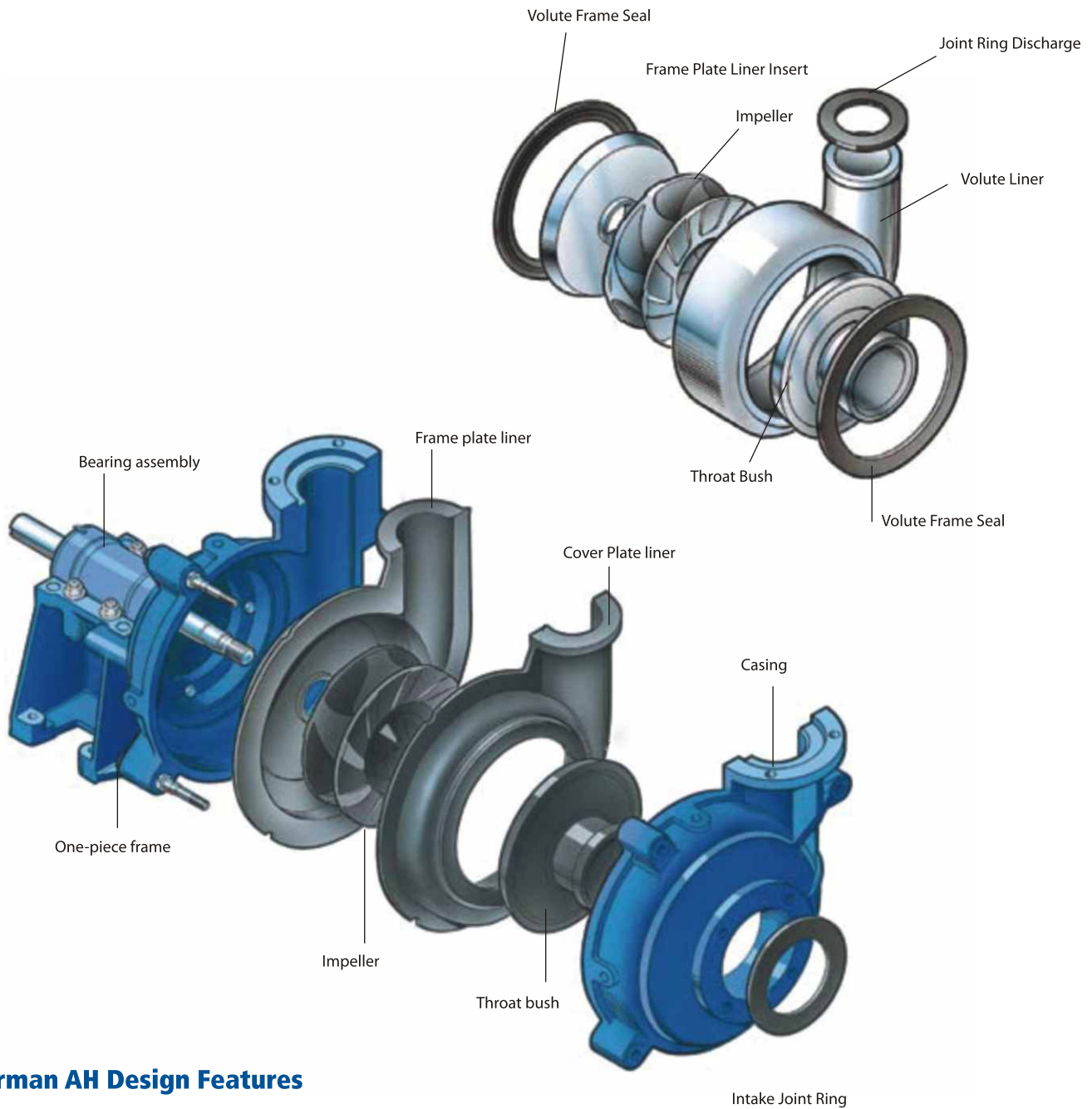
Horizontal Slurry Pumps

Fully Lined Abrasion Resistant Pumps for Severe Services

The Warman horizontal slurry pump offers exceptional wear life and reliability, providing the lowest total cost of ownership.



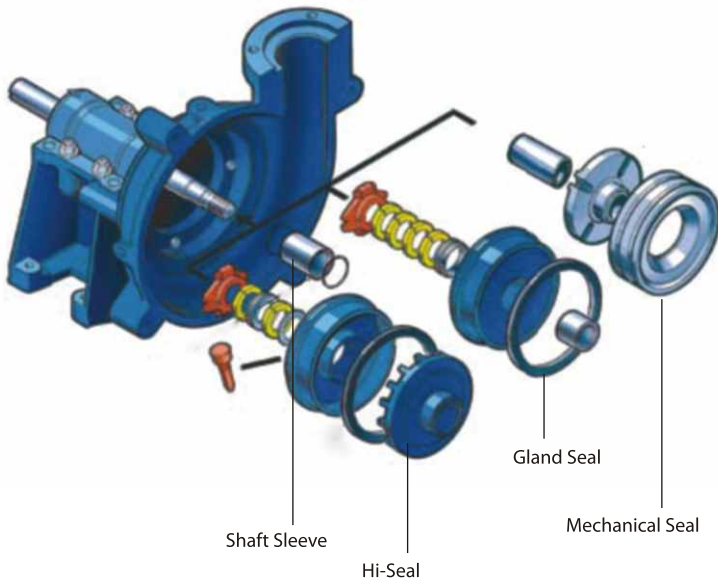
The versatile, fully lined Warman AH offers a wide range of seal and liner configurations allowing the pump to be tailored to the customer's specific application.



Warman AH Design Features

- **Bearing assembly** - A large diameter shaft with short overhang minimizes deflection, contributes to long bearing life. Only four through bolts are required to hold the cartridge type housing in the frame.
- **Liners** - Easily replaceable liners are bolted, not glued to the casing for positive attachment and ease of maintenance. Hard metal liners are completely interchangeable with pressure molded elastomers. Elastomer seal rings back all metal joints.
- **Casing** - Casing halves of cast or ductile iron with external reinforcing ribs provide high operating pressure capabilities and an extra measure of safety.
- **Impeller** - Front and rear shrouds have pump out vanes that reduce recirculation and seal contamination. Hard metal and molded elastomer impeller threads require no inserts or nuts. High efficiency and high head designs are also available.
- **Throat bush** - Wear is reduced and maintenance simplified by the use of tapered mating faces to allow positive accurate alignment during assembly and simple removal.
- **One-piece frame** - A very robust one-piece frame cradles the cartridge type bearing and shaft assembly, an external impeller adjustment mechanism is provided below the bearing housing for easy adjustment of impeller clearance.

Warman pumps provide interchangeability of seal arrangements.



Full flush, low flow, centrifugal, or mechanical seals may be fitted to any sized pump.

Shaft sleeve

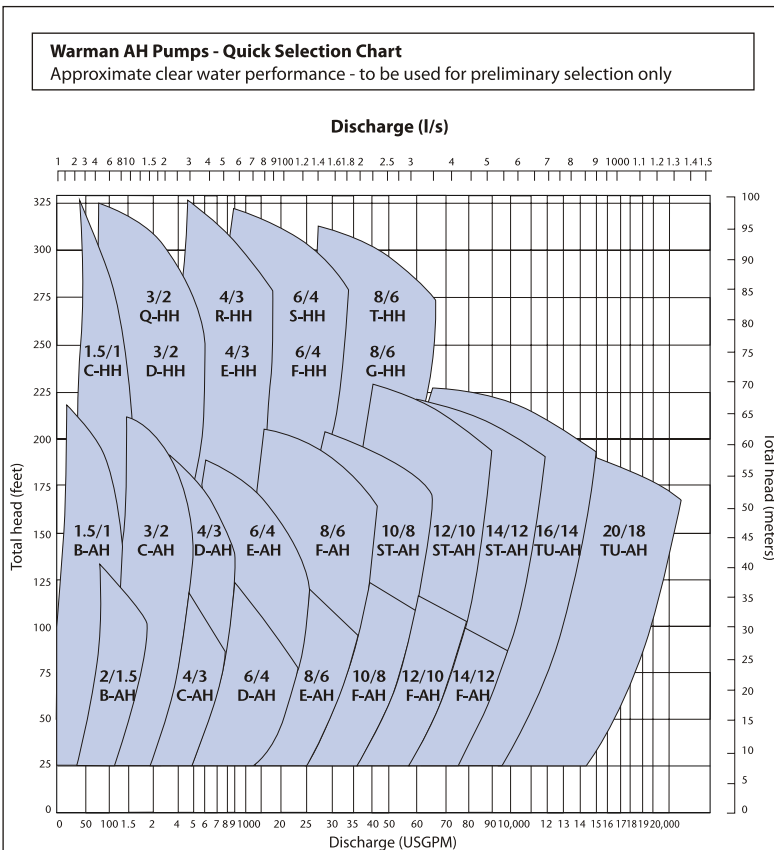
An easily removable shaft sleeve manufactured in either hardened steel or ceramic coated steel with O-ring seals at both ends protects the shaft from abrasive or corrosive contaminants.

Hi seal

External gland sealing water is avoided in most applications by utilizing the "hi-seal" expeller design. Where flushing water is unavoidable, restricted flow gland keep this to a minimum.

Mechanical seal

Available for most applications, single or double mechanical seals can be offered as an alternative to a conventional seal.



Description	Material of Construction											
	Material											
	A05	C21	C23	E03	E05	E62	D21	G01	R33	R38	S21	S42
	Ultra Chrome 27% Cr.	420 c/ Ca40	316 SS / CF8M	En 8	1040 Steel	Mild Steel Cad pl	SG Iron	Cast Iron	Natural Rubber	Natural Rubber	Butyl	Butyl
Cover & Frame Plate												
Throat Bush												
Cover Plate Liner												
Frame Plate Liner												
Frame Plate Liner Insert												
Volute Liner												
Impeller												
Expeller												
Expeller Ring #												
Shaft												
Shaft Sleeve												
Stuffing Box												
Gland												
Base												
Bearing Housing												
Other Bolts												

- For centrifugal sealing only
Standard Material of construction ■ Optional Material of Construction ■

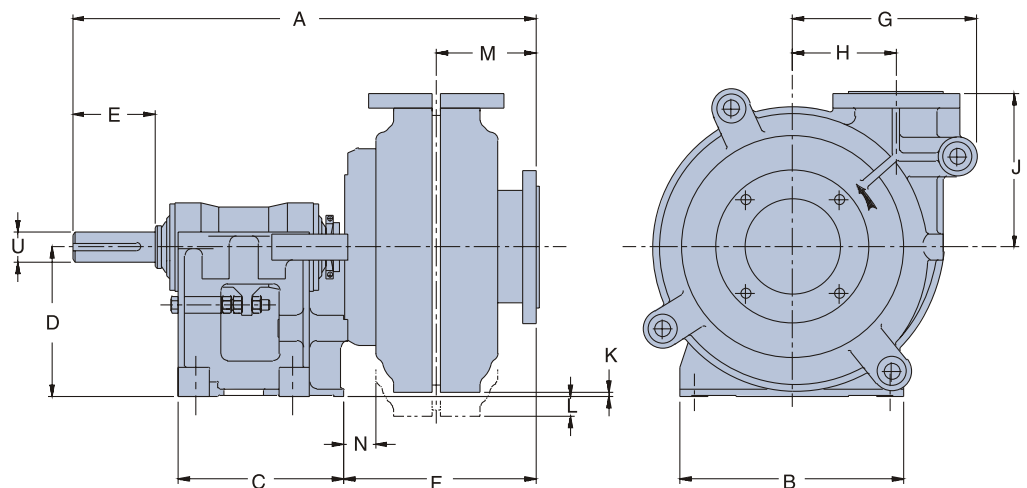
Dimensions

Pump Size	A	B	C	D	U	Key size	E	F	G	H	J	K	L	M	wt/Kgs Metal Lined	Rubber Lined
1.5/1 B-AH	583	295	191	197	28	8x7	79	206	181	98	171	46	-	106	85	73
2/1.5 B-AH	592	295	191	197	28	8x7	79	269	203	114	184	33	-	114	95	80
3/2 C-AH	766	406	241	254	42	12x8	121	280	238	138	210	71	-	151	180	150
4/3 C-AH	843	403	241	254	42	12x8	121	353	292	149	262	24	-	187	295	215
4/3 D-AH	943	492	289	330	65	18x11	164	353	292	149	262	100	-	187	360	280
6/4 D-AH	1021	492	289	330	65	18x11	164	424	407	229	338	11	-	219	610	440
6/4 E-AH	1178	622	365	457	80	22x14	222	433	407	229	338	138	-	219	785	615
8/6 E-AH	1302	622	365	457	80	22x14	222	557	551	318	460	-	62	292	1460	99
8/6 F-AH	1507	857	540	610	100	28x16	279	573	551	318	460	90	-	292	1860	1390
10/8 E-M	1336	622	448	457	80	22x14	222	584	613	381	470	-	83	318	1620	1120
10/8 F-M	1541	857	635	610	100	28x16	279	573	613	381	470	70	-	318	2010	1510
10/8 F-AH	1547	857	635	610	100	28x16	279	585	696	438	470	-	12	333	2920	2460
10/8 ST-AH	1748	1150	780	650	120	32x18	280	692	673	419	635	27	-	333	3430	2840
12/10E-M	1348	622	448	457	80	22x14	222	598	696	438	470	-	147	324	1860	1320
12/10F-M	1348	622	448	457	80	22x14	222	598	696	438	470	-	-	324	2170	1630
112/10F-AH	1721	991	991	705	100	28x16	279	753	755	464	673	-	104	381	3790	2940
12/10 G-AH	-	1207	876	851	140	36x18	356	749	755	464	673	-	-	381	4380	3590
12/10 ST-AH	1716	1150	780	650	120	32x18	280	762	755	464	673	-	65	381	4190	3410
14/12 G-AH	2045	1219	8761	851	140	38x22	356	799	944	629	832	-	22	406	6060	4970
14/12 ST-AH	1873	1150	780	650	120	32x18	280	812	937	629	832	-	224	406	5870	4780

Note

1. Due to Continuous up gradation, any of the parameters above can be changed without prior notice.
2. For detail of higher sizes or duties, please contact any of our offices given below.
3. All dimensions are in mm.

WARMAN®
Centrifugal Slurry Pumps
GEHO®
PD Slurry Pumps
LINATEX®
Rubber Products
VULCO®
Wear Resistant Linings
CAVEX®
Hydrocyclones
FLOWAY®
PUMPS
Vertical Turbine Pumps
ISOGATE®
Slurry Valves
MULTIFLO®
Mine Dewatering Solutions
HAZLETON®
Specialty Slurry Pumps
LEWIS PUMPS™
Vertical Chemical Pumps
BEGEMANN PUMPS™
Centrifugal Process Pumps
WEIR MINERALS SERVICES™



Factory & Corporate Office:

Weir Minerals India Pvt. Ltd.
471/D-1, 3rd Main, 4th Phase, Peenya Industrial Area, Bangalore-560058 Ph - +91(0) 80 41372777, Fax - +91 (0) 80 41179230

Sales & Marketing Office:

Weir Minerals India Pvt. Ltd.
2, Block A, Platinum City, HMT Watch Factory Road, Off Yeshwanthpur - Peenya Road, Bangalore-560022. Ph - +91 (0) 80 40449000, Fax - +91 (0) 80 40449090

Branch Offices:

- Hig - 6/2, Housing Board Colony, Chandrashekharpur, Bhubaneswar - 751 016, Orissa. Ph - 0674-2742024
- 'Mangalam', Block A, Room No. 303, 3rd Floor, #24/26, Hemanta Basu Sarani, Kolkata - 700 001.
Ph - +91 (0) 33 3028 4891 Fax- +91 (0) 33 302804895, Mob: +91 (0) 98300 17737
- 219, Ansal Chambers II, 6, Bhikaji Cama Place, New Delhi - 110 066.
Ph - +91 (0) 11 4602 6776, Fax- +91 (0) 11460 32296, Mob: +91 (0) 98739 91107
- 910, Siddharth Complex, Nr. Express Hotel, R. C. Dutt Road, Alkapuri, Vadodara - 390 007. Ph - +91 26523 55026, Mobile : +91 (0) 97277 15340 / 97277 15160
- TC 65/2127(3), Athira, CDit Road, Studio Jn, Thiruvallam - 695 027. Thiruvananthapuram, Kerala.
Ph - 0471 2382342, Fax: +91 (0) 471 2382342, Mobile: +91 (0) 9745500391
- D-42, Dream Emerald, Behind: Rosery College, Navelim - 403 707. Goa. Mob: +91 (0) 93706 36535
- Door No. 39-10-40/3/1, Plot No. 107, Ground Floor, Tenneti Nagar, Madhava Nagar, Vishakapatnam - 530 007.
Ph - +91 (0) 891 2719660 / 9661, Fax- 08912719661, Mob: +91 (0) 97010 01146 / 97034 44146

Total Care Centre :

- Special Plot No: 30, Industrial Estate, TB Dam Road, Dist : Bellary, Hospet - 583 203. Karnataka, Ph - +91 (0) 96208 00021
- Door No. 39-10-40/3/1, Plot No. 107, Ground Floor, Tenneti Nagar, Madhava Nagar, Vishakapatnam - 530 007.
Ph - +91 (0) 891 2719660/9661, Fax- 08912719661, Mob: +91 (0) 97010 01146 / 97034 44146

Excellent
Minerals
Solutions

